

# Moose Lake Watershed Society

## Tributary Monitoring

- Received \$18,000 from ESRD to monitor tributaries of Moose Lake
- Partnered with Lakeland Agricultural Research Association and Beaver River Watershed Alliance for in-kind support of roughly \$9,000

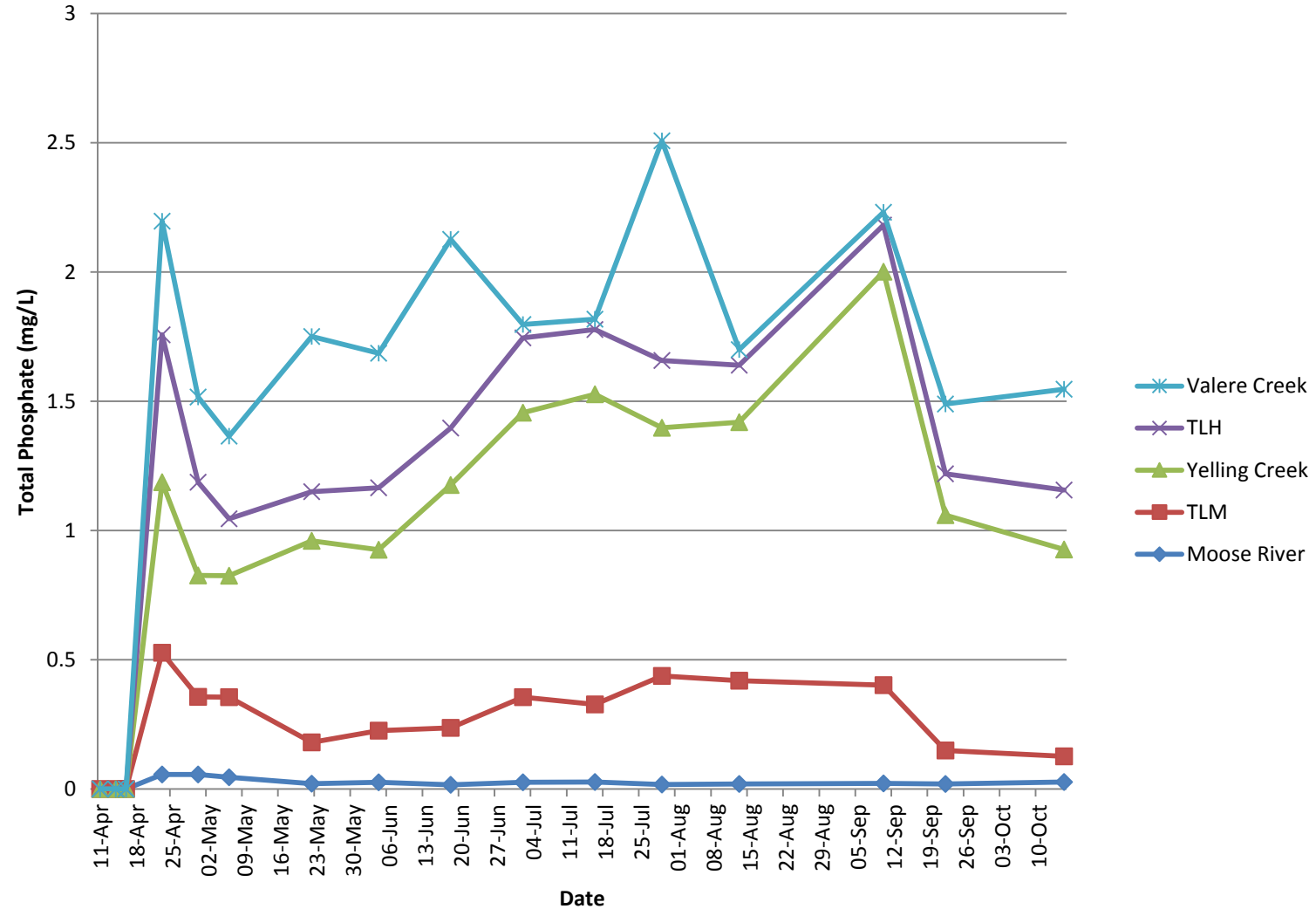


# Preliminary Results

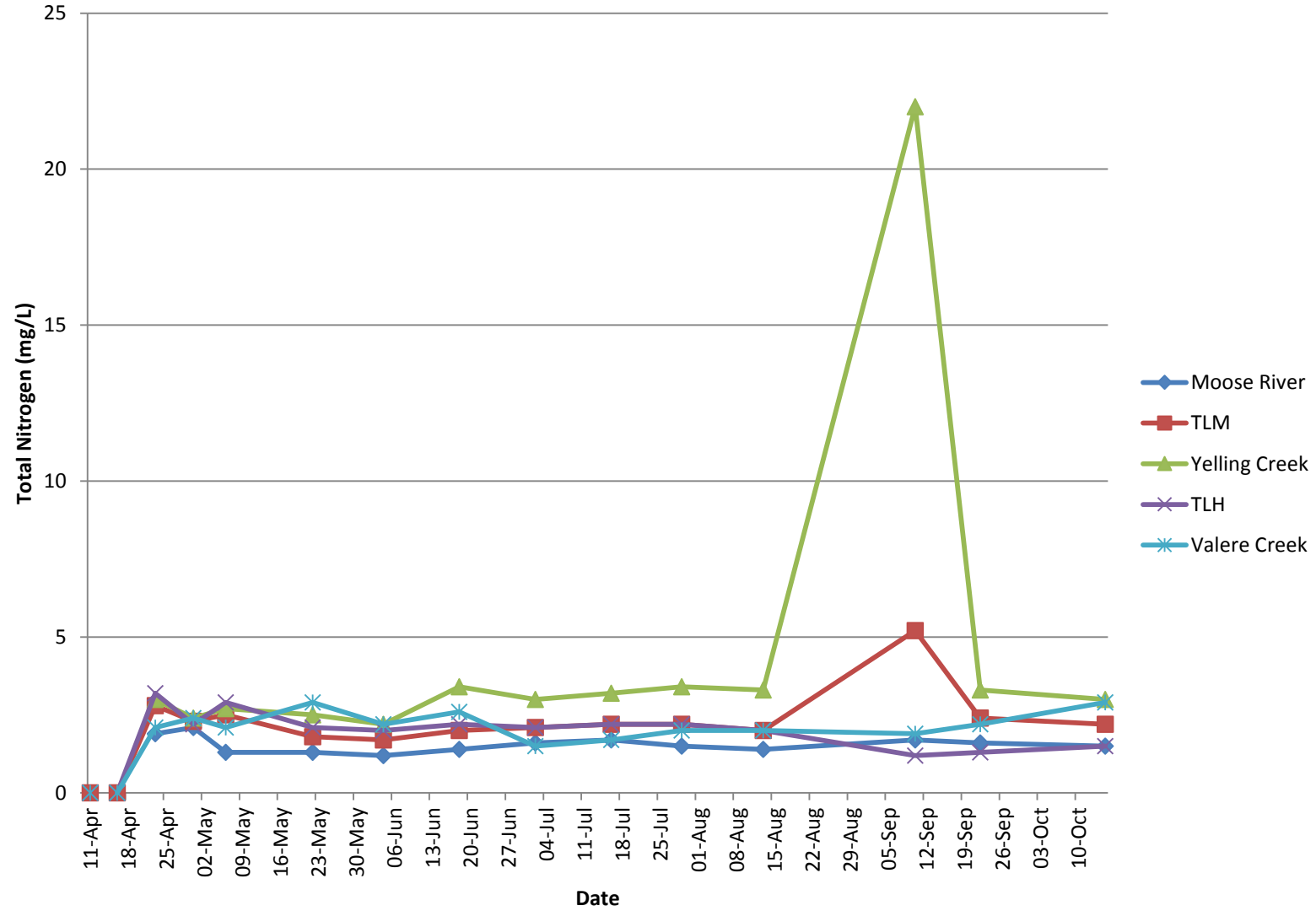
- Sampled from April 11 to October 15
- 5 tributary monitoring sites
- Guidelines for surface water quality:
  - Total Nitrogen 1.0 mg/L
  - Total Phosphorous 0.05 mg/L
  - Fecal Coliforms 100/100 mL
  - Total Coliforms 1000/100mL



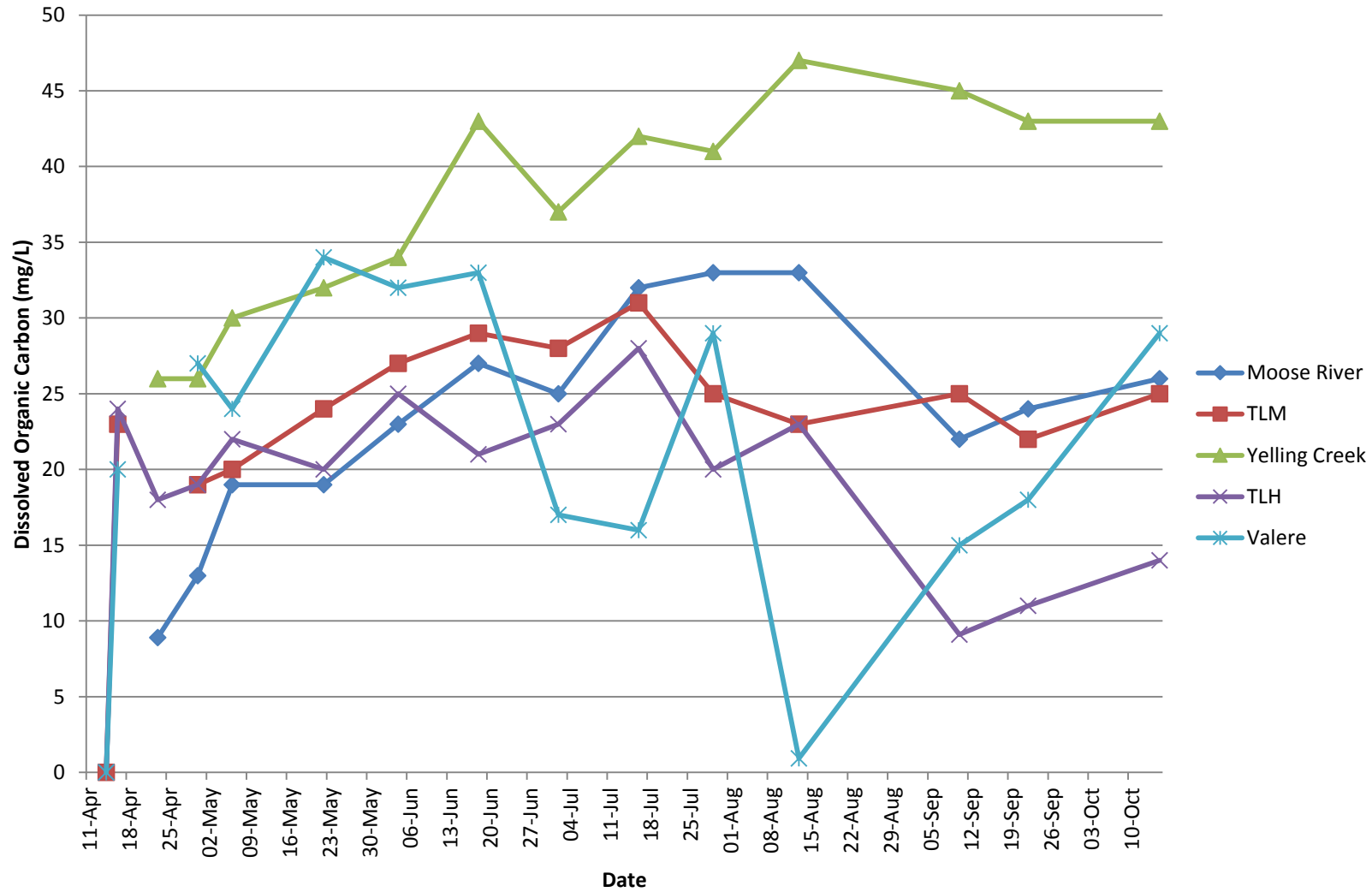
# Phosphates



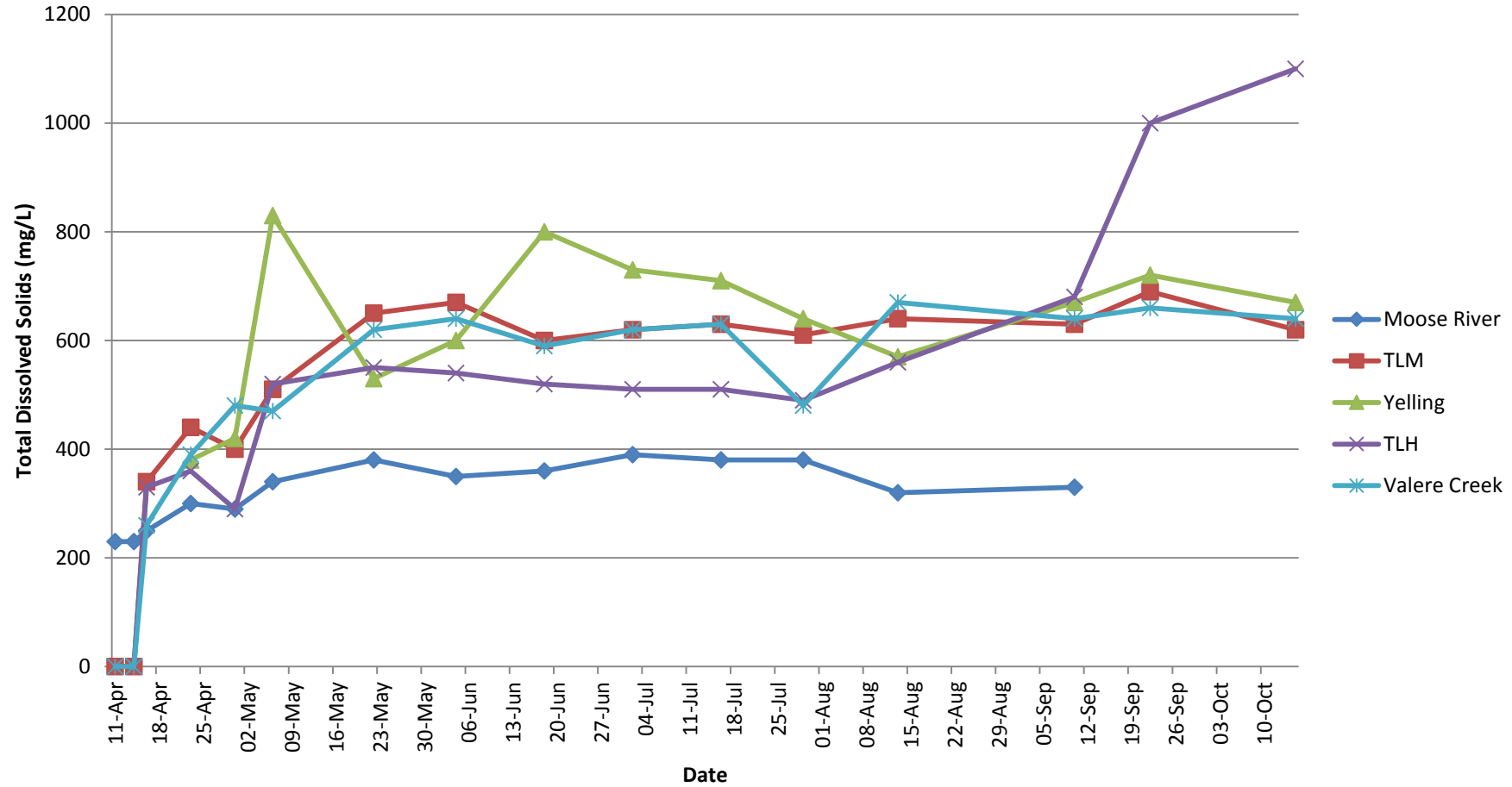
# Total Nitrogen



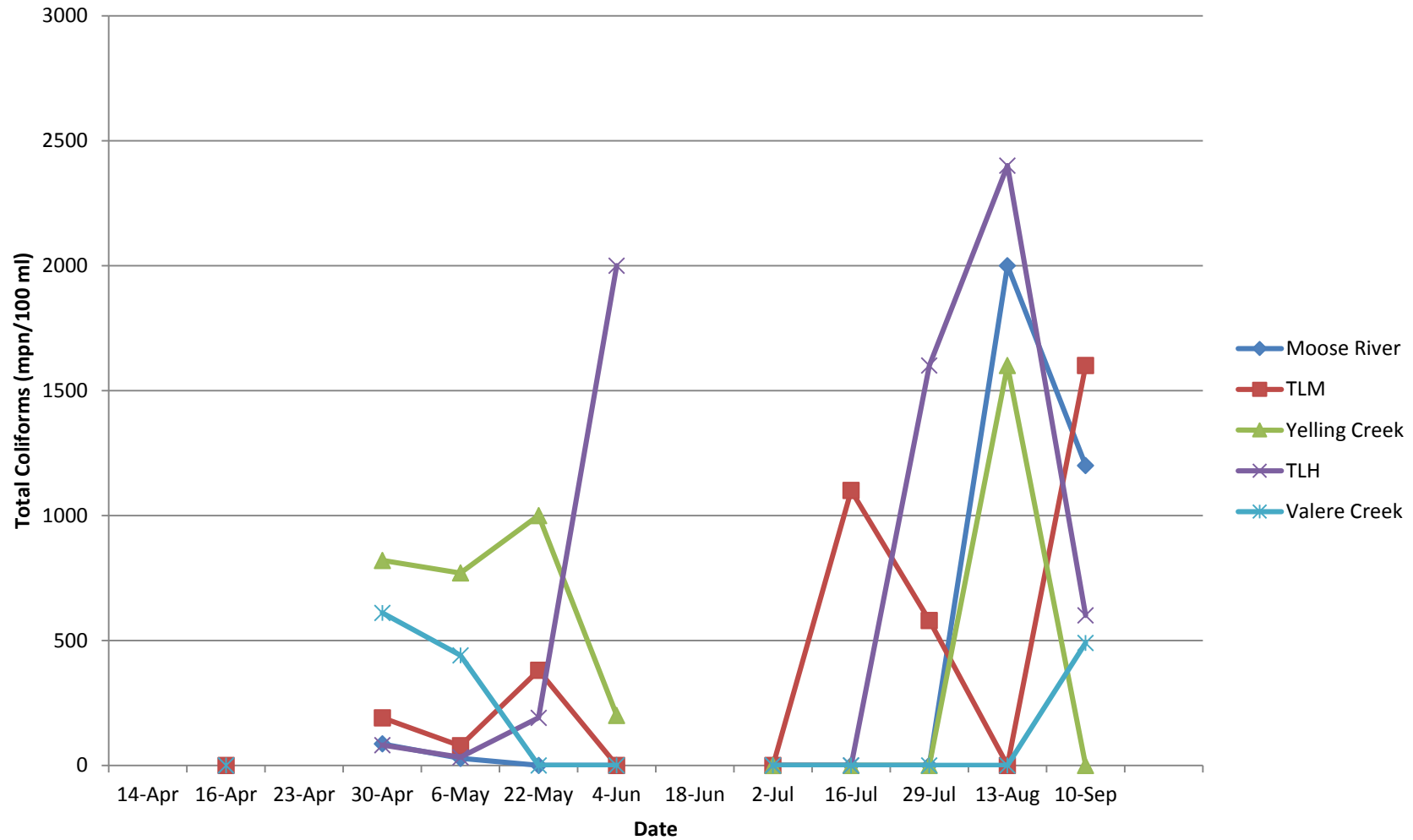
# Dissolved Organic Carbon



# Total Dissolved Solids



# Total Coliforms



# Fecal Coliforms

